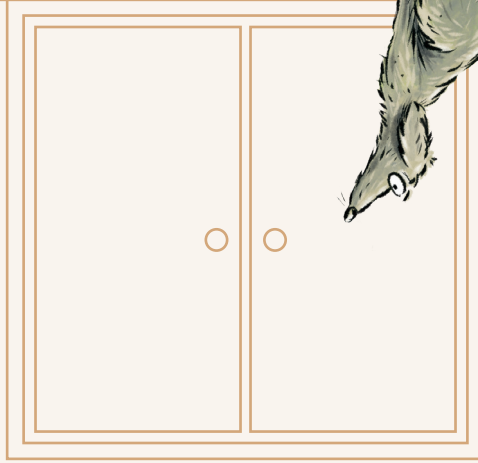




Burials
Human Remains
Roman Gods



ARBEIA



Altars
Tombs
Building Stones



SET IN STONE GALLERY

DISCOVER THE TREASURES FOUND AT ARBEIA



Listen to the recording in the gallery.
Can you tell Regina's story?

Hand-drawn lined writing area for notes.



ARBEIA
SOUTH SHIELDS ROMAN FORT



Here are some fun facts and activities to help you explore the
SET IN STONE GALLERY



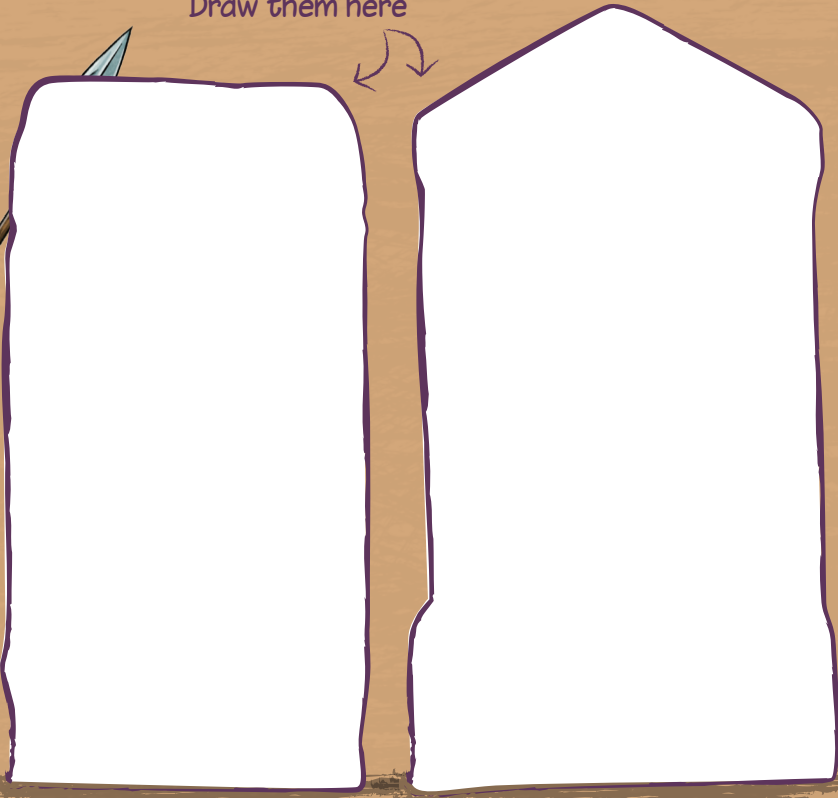
Supported using public funding by
ARTS COUNCIL ENGLAND

Funded by a donation in memory of George Murray



At Arbeia, two beautifully-carved tombstones were found.

Draw them here

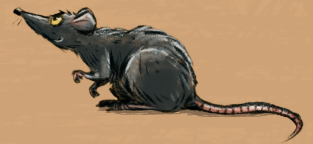


Who were the tombstones for?

What did the people have in common?

Can you work out how old they were when they died?

What kind of people do you think they were?



Look at the building stones. Can you make out the letters carved in them?

Draw some here



Who do you think might have put them there and why?



The Romans performed ceremonies and prayed to many gods, making offerings at these altars.

Find the objects carved on the sides of the altars. These were used during the ceremonies; can you think what for?

Design your own altar here, what would it feature?

